

V I C T O R I A B E C K H A M

Spring Summer 2015

1
Superskinny
Mans shirt



2
Superskinny
Mans shirt



3
Ankle slim
Mans shirt



4
Ankle slim
Mans shirt



5
Leather leggings
Mans shirt



6
Flare
Mans shirt



7
Flare
Mans shirt



8
Leather swim shorts
Mans shirt



9
Cap sleeve coat
Long sleeve tee
Superskinny



10
Cap sleeve tee
Ankle slim



11
Open back shirt
Superskinny



12
Square sleeve shirt
Superskinny



13
Mans shirt
Superskinny



14
Stripe mans shirt
Leather swim shorts



15
Long sleeve tee
Leather swim shorts





1
Superskinny
Mans shirt



2
Superskinny
Mans shirt



3
Ankle slim
Mans shirt



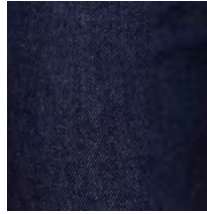
4
Ankle slim
Mans shirt



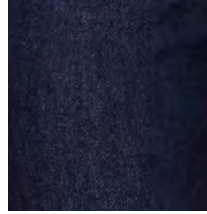
5
Leather leggings
Mans shirt



VB1 366
Superskinny
Pepper



VB1 368
Superskinny
Big twill
Blue



VB1 368
Superskinny
Big twill
Blue



VB1 367
Superskinny
Marlin



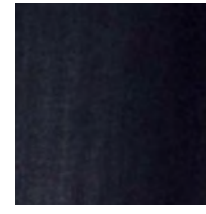
VB2 368
Ankle slim
Seberg



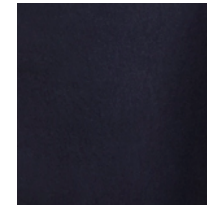
VB2 CF 217
Ankle slim
Clean white



VB2 217
Ankle slim
Clean white



VB2 CF 213
Ankle slim
Washed black



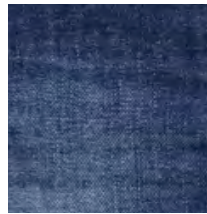
VB85 CF 254
Leather leggings
Black



VB1 213
Superskinny
Solid black



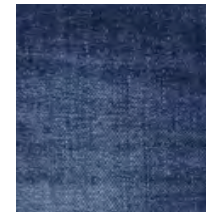
VB1 262
Superskinny
Sunbleached



VB1 366
Superskinny
Pepper



VB1 262
Superskinny
Sunbleached



VB2 366
Ankle slim
Pepper



VB2 262
Ankle slim
Mid stone



VB2 368
Ankle slim
Seberg



VB2 262
Ankle slim
Mid stone



VBT 316 309
Mans shirt
White



VB1 213
Superskinny
Washed black



VB1 314
Superskinny
Japan patch repair



VB1 213
Superskinny
Solid black



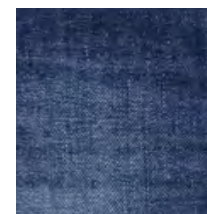
VB1 314
Superskinny
Japan patch repair



VB2 CF 213
Ankle slim
Solid black



VB2 CF 287
Ankle slim
Kept



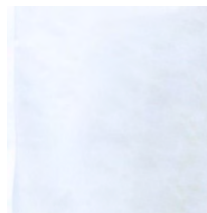
VB2 366
Ankle slim
Pepper



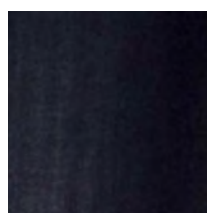
VB2 CF 287
Ankle slim
Kept



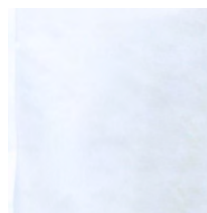
VB1 367
Superskinny
Marlin



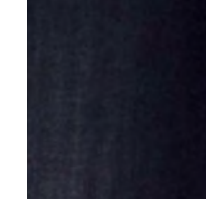
VBT 316 309
Mans shirt
Cotton
White



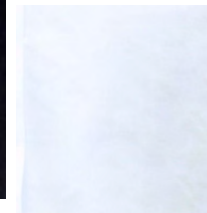
VB1 213
Superskinny
Washed black



VBT 316 309
Mans shirt
Cotton
White



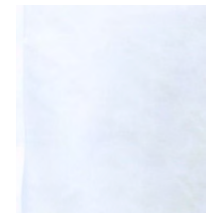
VB2 CF 213
Ankle slim
Washed black



VBT 316 309
Mans shirt
White



VB2 CF 213
Ankle slim
Solid black



VBT 316 309
Mans shirt
White



6
Flare
Mans shirt



7
Flare
Mans shirt



8
Leather swim shorts
Mans shirt



9
Cap sleeve coat
Long sleeve tee
Superskinny



10
Cap sleeve tee
Ankle slim



11
Open back shirt
Superskinny



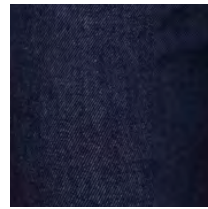
12
Square sleeve shirt
Superskinny



13
Mans shirt
Superskinny



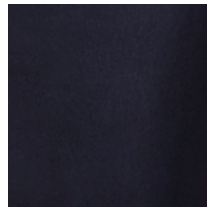
14
Stripe mans shirt
Leather swim shorts



VB 108 368
Flare
Big twill



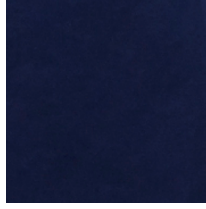
VB 108 386
Flare
Seberg



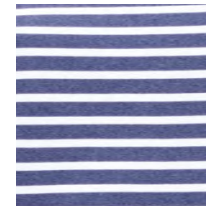
VBH 203 371
Leather swim shorts
Black



VBT 316 309
Mans shirt
White



VBJ 138 354
Cap sleeve coat
Navy



VBT 141 360
Cap sleeve tee
Stripe
Navy/white



VBT 250 309
Open back shirt
White



VBT 290 333
Square sleeve shirt
Pale blue



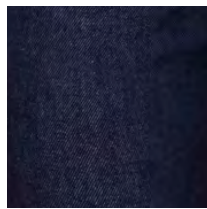
VBT 316 309
Mans shirt
White



VBT 316 358
Stripe mans shirt
Blue/white stripe



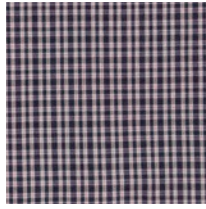
VB 108 386
Flare
Seberg



VB 108 368
Flare
Big twill



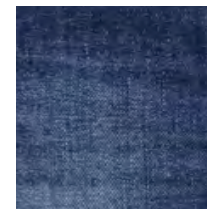
VBH 203 371
Leather swim shorts
White



VBJ 138 357
Cap sleeve coat
Heritage Tartan



VBT 141 347
Cap sleeve tee
White



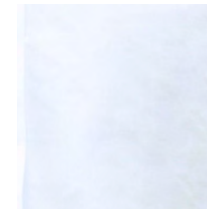
VB1 366
Superskinny
Pepper



VBT 290 309
Square sleeve shirt
White



VBT 316 358
Stripe mans shirt
Blue/white stripe



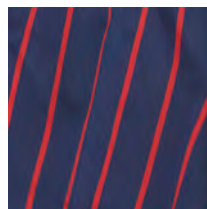
VBT 316 309
Mans shirt
White



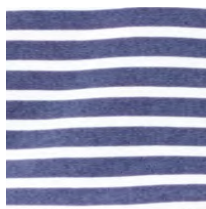
VB 108 CF 213
Flare
Solid black



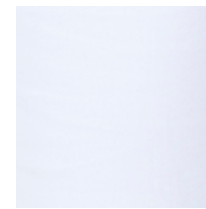
VB 108 CF 213
Flare
Solid black



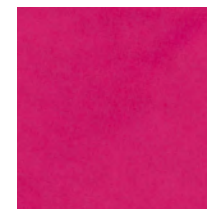
VBH 203 352
Swim Shorts
Tech stripe



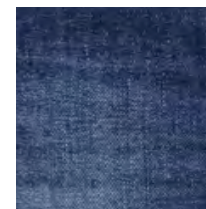
VBT 328 360
Long sleeve tee
Navy white stripe



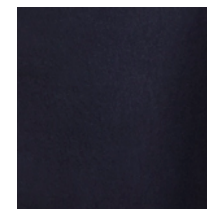
VB2 217
Ankle slim
Clean white



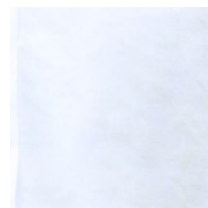
VBT 250 356
Square sleeve shirt
Magenta



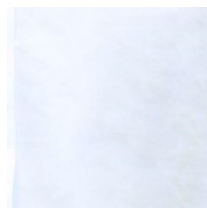
VB1 366
Superskinny
Pepper



VBH 203 371
Leather swim shorts
Black



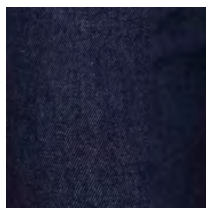
VBT 316 309
Mans shirt
White



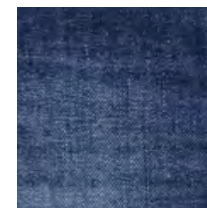
VBT 316 309
Mans shirt
White



VBH 203 358
Swim Shorts
Blue/white stripe



VB1 368
Superskinny
Big twill



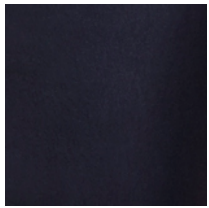
VB1 366
Superskinny
Pepper



15
Long sleeve tee
Leather swim shorts



VBT 328 360
Long sleeve tee
Navy white stripe



VBH 203 371
Leather swim shorts
Black

Press Contacts:

UK and rest of the world: Florence Shippey E: florence.shippey@victoriabeckham.com T: +44 207 801 2012

North America: KCD, Nina Stuart E: stuart@kcdworldwide.com T: +1 212 590 5111

Europe: KCD, Melisande Moreau E: moreau@kcdworldwide.fr T: +33 149 962 075

Sales Contacts:

UK/EU/Rest of the World: Saskia Terzani E: saskia.terzani@victoriabeckham.com T: +44 207 801 2012

The Americas: Savvas Kaminarides E: savvas@victoriabeckham.com T: +1 212 337 0646

Customer Services:

UK and rest of the world: Client Services E: clientservices@victoriabeckham.com T: +44 207 501 1122

North America: Client Services E: usclientservices@victoriabeckham.com T: +1 310 432 2500

UK Head Office: Victoria Beckham 33 Ransomes Dock 35-37 Parkgate Road London SW11 4NP
T: +44 207 801 2012 www.victoriabeckham.com © Beckham Ventures Ltd 2014